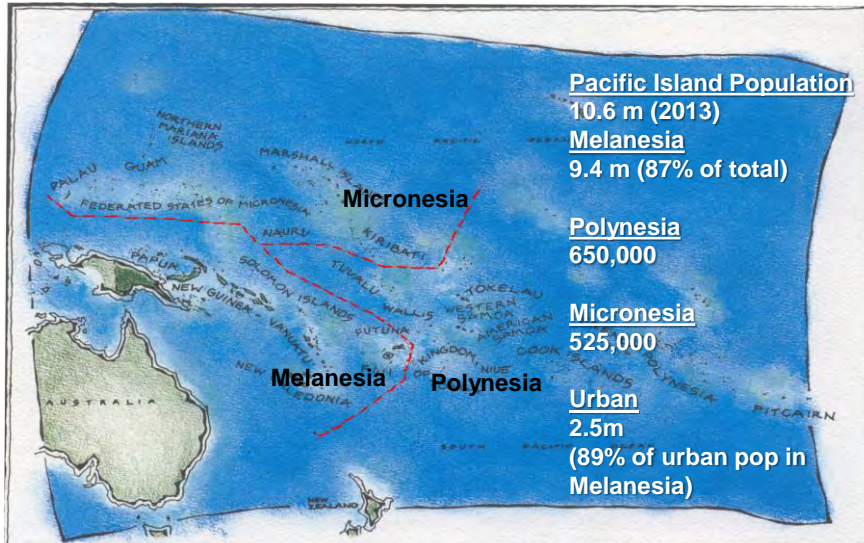
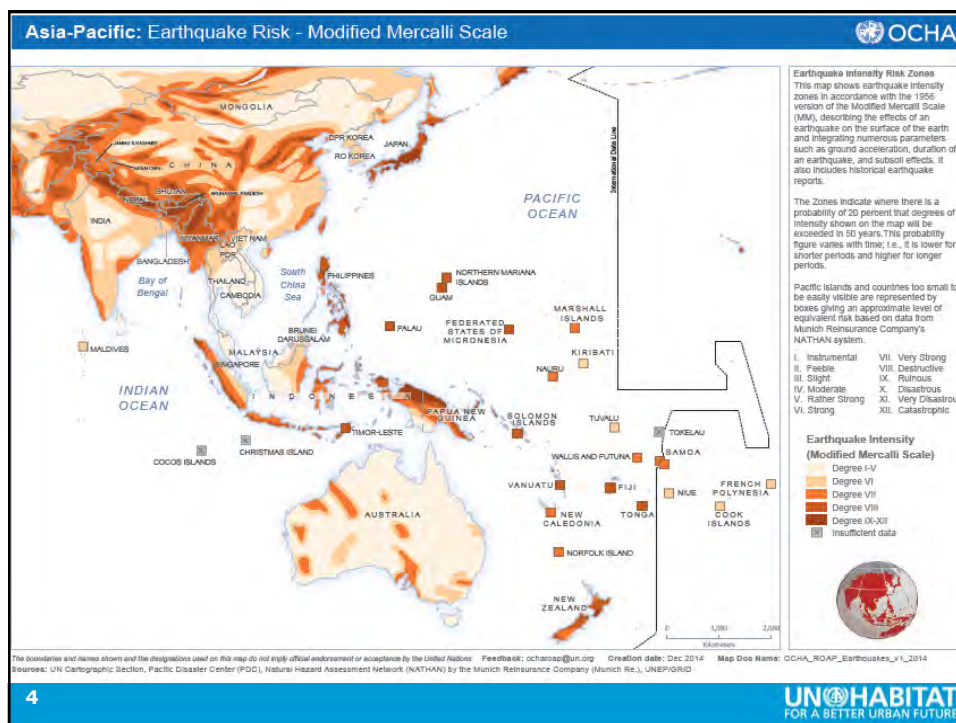
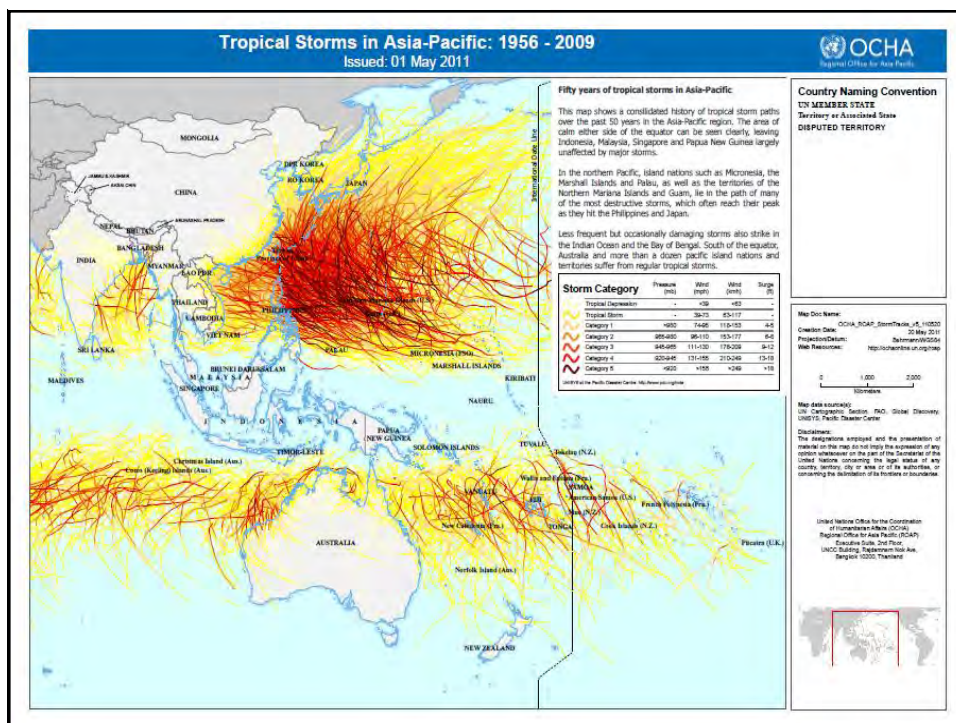




Pacific Island States

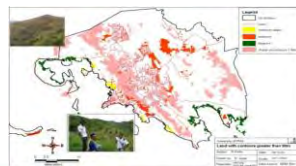
Population and Urbanization Trends





Climate Change and Resilience Support for the Pacific

- Assess climate change impacts and disaster risks identifying challenges and opportunities in 5 cities
- Enhance Climate Change national-local policy dialogues (NSS)
- Design innovative and pro-poor adaptation and mitigation Action Plans and pilot initiatives
- Capacity building to support Climate Change strategies at the city/ local level
- Promote regional Climate Change knowledge/ experience sharing and C2C cooperation
- Post Disaster Shelter and Urban Systems' Recovery Planning



5

UN HABITAT
FOR A BETTER URBAN FUTURE

Post Disaster Support

- Shelter Cluster Coordination (support)
- Shelter recovery policy support
- Urban Systems Recovery Planning



6

UN HABITAT
FOR A BETTER URBAN FUTURE

Challenges in realizing climate and disaster risk resilience

- National Urban Policy does not address DRR and Climate Change
- Limited planning capacity at the local level
- Weak infrastructure (limited entry point for risk mitigation and poverty alleviation)
- Opportunities for eco-system based adaptation not utilized
- Need to improve end-to-end early warning systems
- Little/no attention given by national offices to cities and towns that are vulnerable to disaster

7

UN HABITAT
FOR A BETTER URBAN FUTURE

Potential areas for collaboration and partnership with Japan

- Knowledge sharing
- Technology transfer
- City to city cooperation on resilience building
- Post-disaster recovery support (shelter and basic infrastructure)
- Piloting of small projects (eco-system based adaptation, renewable energy, early warning systems, etc)

8

UN HABITAT
FOR A BETTER URBAN FUTURE

